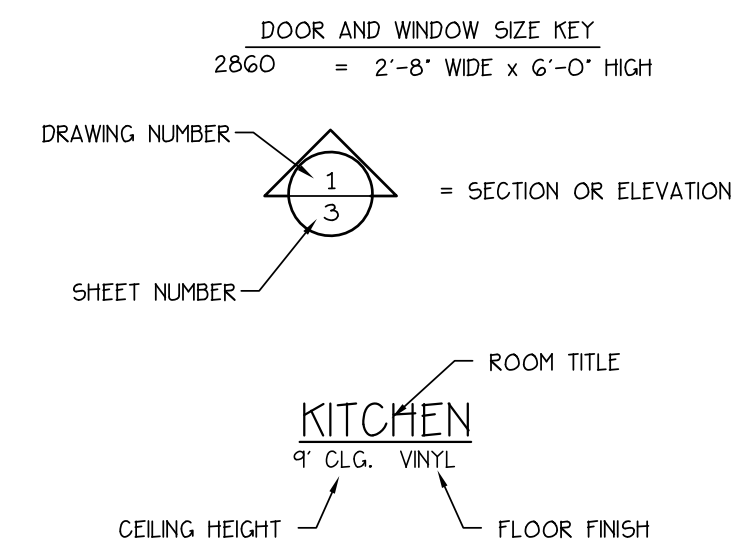
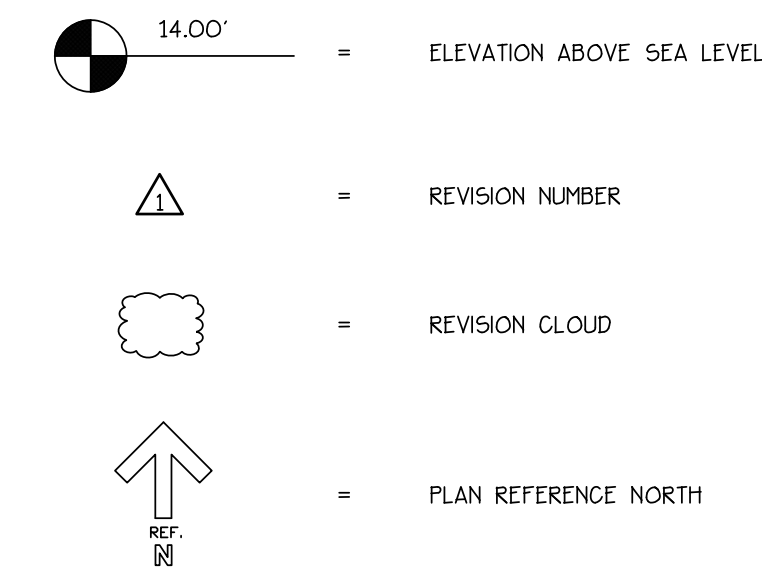


SYMBOLS + KEYS



1 DRAWING TITLE
DETAIL OR ELEVATION NUMBER



| | |
|------|--------------------------|
| ⚡ | SINGLE POLE SWITCH |
| ⚡⚡ | THREE WAY SWITCH |
| ⚡⚡⚡ | FOUR WAY SWITCH |
| ⚡⚡⚡ | DIMMER SWITCH |
| ⚡⚡⚡ | SPEED CONTROL |
| ⊖ | DUPLEX OUTLET |
| ⊖ | 1/2 HOT OUTLET |
| ⊖ WP | WATER PROOF OUTLET |
| ⊖ GF | GROUND FAULT OUTLET |
| ⊖ | QUADREPLEX OUTLET |
| ⊖ | SPECIALTY OUTLET |
| ⊖ | FLOOR OUTLET |
| △ | TELEPHONE JACK |
| ⊖ | THERMOSTAT |
| ⊖ | TELEVISION JACK |
| V | VENT |
| V/L | VENT W/ LIGHT |
| ○ | SURFACE MOUNTED FIXTURE |
| ○ | RECESSED FIXTURE |
| ○ | WALL MOUNTED FIXTURE |
| △ | FLOOD LIGHT |
| □ | FLOURESCENT FIXTURE |
| + | CEILING FAN |
| ▽▽▽ | STRIP LIGHTING |
| ⊖ | CEILING BOX |
| ⊖ | DOOR CHIME |
| ⊖ | ELECTRICAL PANEL |
| ⊖ | SMOKE DETECTOR |
| ⊖ | CARBON MONOXIDE DETECTOR |

CONCEPTUAL RENDERING



DRAWING INDEX

- 0 COVER SHEET
- 1 FOUNDATION + ROOF PLANS; DETAILS
- 2 FLOOR PLANS
- 3 ELEVATIONS
- 4 WALL SECTIONS + DETAILS
- 5 ELECTRICAL LAYOUTS
- SP1 SPECIFICATIONS
- SP2 SPECIFICATIONS
- SP3 SPECIFICATIONS

GENERAL INFO.

AREA CALCULATIONS
FIRST FLOOR HEATED = 1066 S.F.
SECOND FLOOR HEATED = 712 S.F. COVERED PORCHES = 843 S.F.
TOTAL HEATED = 1778 S.F.

LONG RESIDENCE
LOT # 2506 CARLTON LANDING
EUFALA, OKLAHOMA

ARA
ALLISON RAMSEY
Architects Inc. creating sustainable timeless design
1003 Charles St.
Beaufort SC, 29902
(843) 984-6559
www.allisonramseyarchitect.com

THIS PLAN HAS BEEN PREPARED TO MEET THE PROFESSIONAL STANDARDS AND PRACTICES, HOWEVER, BEARING IN MIND CODES AND REGULATIONS WHICH MAY VARY FOR DIFFERENT LOCATIONS. IT IS THE RESPONSIBILITY OF THE PURCHASER OF THIS PLAN TO VERIFY THE FOLLOWING BEFORE BEGINNING CONSTRUCTION: ALLISON RAMSEY ARCHITECTS, INC. ASSUMES NO LIABILITY FOR ANY WORK CONSTRUCTED FROM THIS PLAN.
-VERIFY ALL DIMENSIONS PRIOR TO PROCEEDING WITH CONSTRUCTION
-PLANS INDICATE LOCATIONS ONLY; ENGINEERING ASPECTS SHOULD INCORPORATE ACTUAL SITE CONDITIONS.
-LOADS + WINDING LOADS ARE NOT INCLUDED. THESE SHOULD BE OBTAINED FROM A LOCAL ENGINEER OR ARCHITECT.
-ELECTRICAL LAYOUTS ARE NOT INCLUDED. THESE SHOULD BE OBTAINED FROM A LOCAL ELECTRICAL ENGINEER OR ARCHITECT.
-EQUIPMENT IS SIZED CORRECTLY FOR YOUR PARTICULAR REGION AND CONDITIONS.
-VERIFY ALL STRUCTURAL ELEMENTS WITH LOCAL ENGINEER AND/OR ARCHITECT.

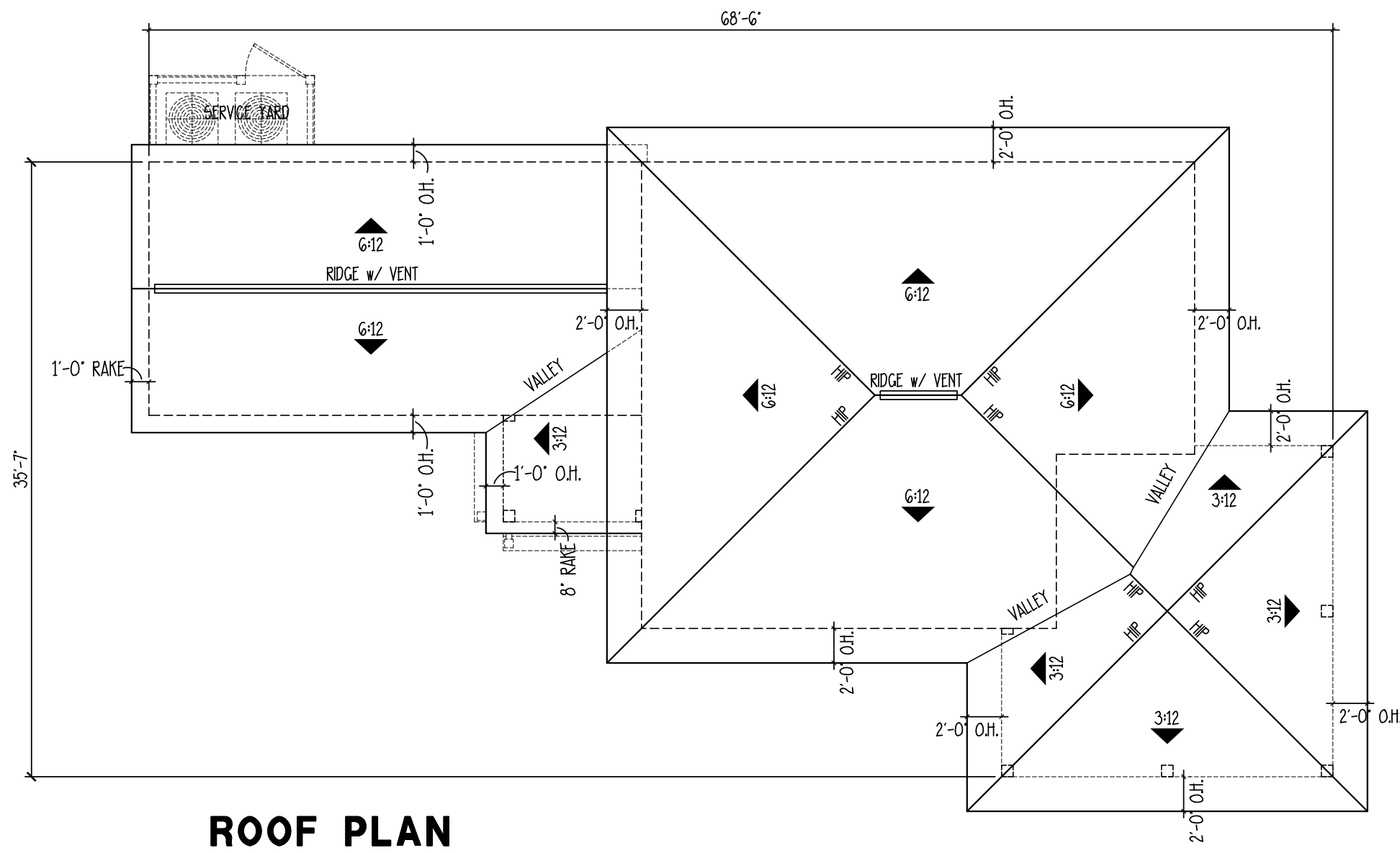
| | |
|------------|-----------|
| DATE: | 8/27/2019 |
| JOB NO.: | 19383 |
| OWN. BY: | RF |
| DWG. NAME: | 19383.dwg |

0

LONG RESIDENCE

LOT # 2506 CARLTON LANDING, EUFALA, OKLAHOMA

Copyright 2019 by Allison Ramsey Architects, Inc. All rights reserved.

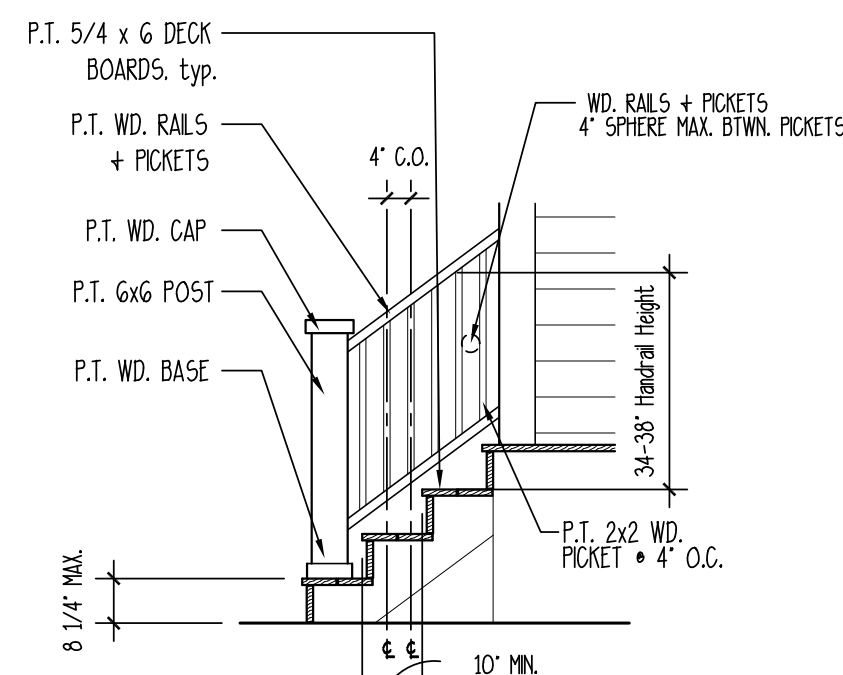


ROOF PLAN

*NOTE:

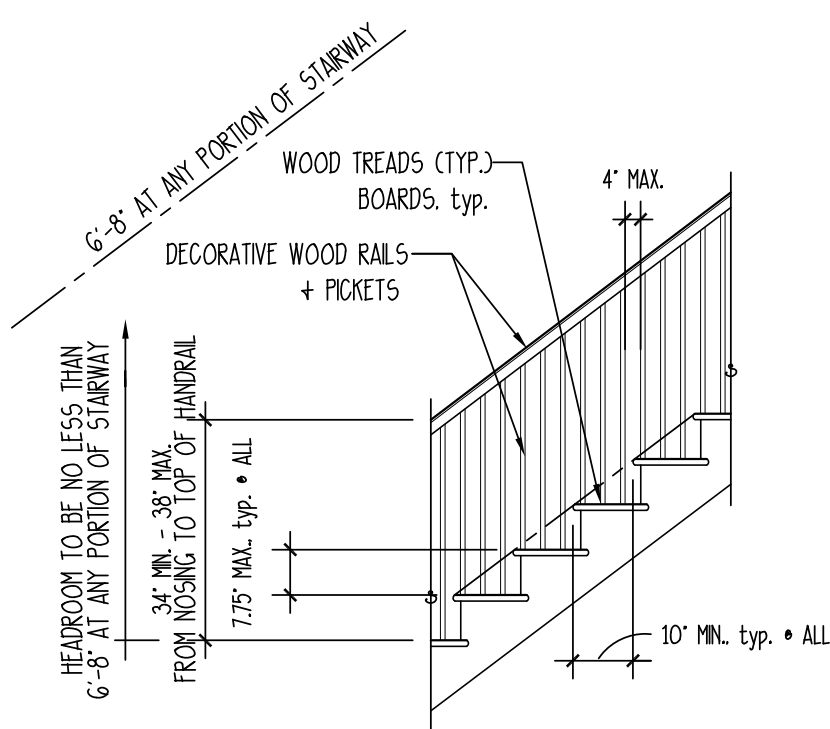
1. ALL PENETRATIONS TO BE LOCATED AS INCONSPICUOUSLY AS POSSIBLE. • REAR OR SIDES OF HOUSE AS POSSIBLE.
2. ROOF PENETRATIONS NEED TO BE KEPT TO A MINIMUM (COMBINED WHEN POSSIBLE).
3. ALL ROOF / WALL PENETRATIONS TO BE PAINTED TO MATCH ROOF COLOR.
4. TWO (2) LAYERS UNDERLAYMENT REQUIRED WHEN 4:12 ROOF PITCH OR LOWER.
5. METAL ROOF SEAMS NOT TO EXCEED 16" O.C.
6. METAL ROOF SEAMS TO BE 1 1/2" TO 1 3/4" N HEIGHT

SCALE: 1/8" = 1'-0"



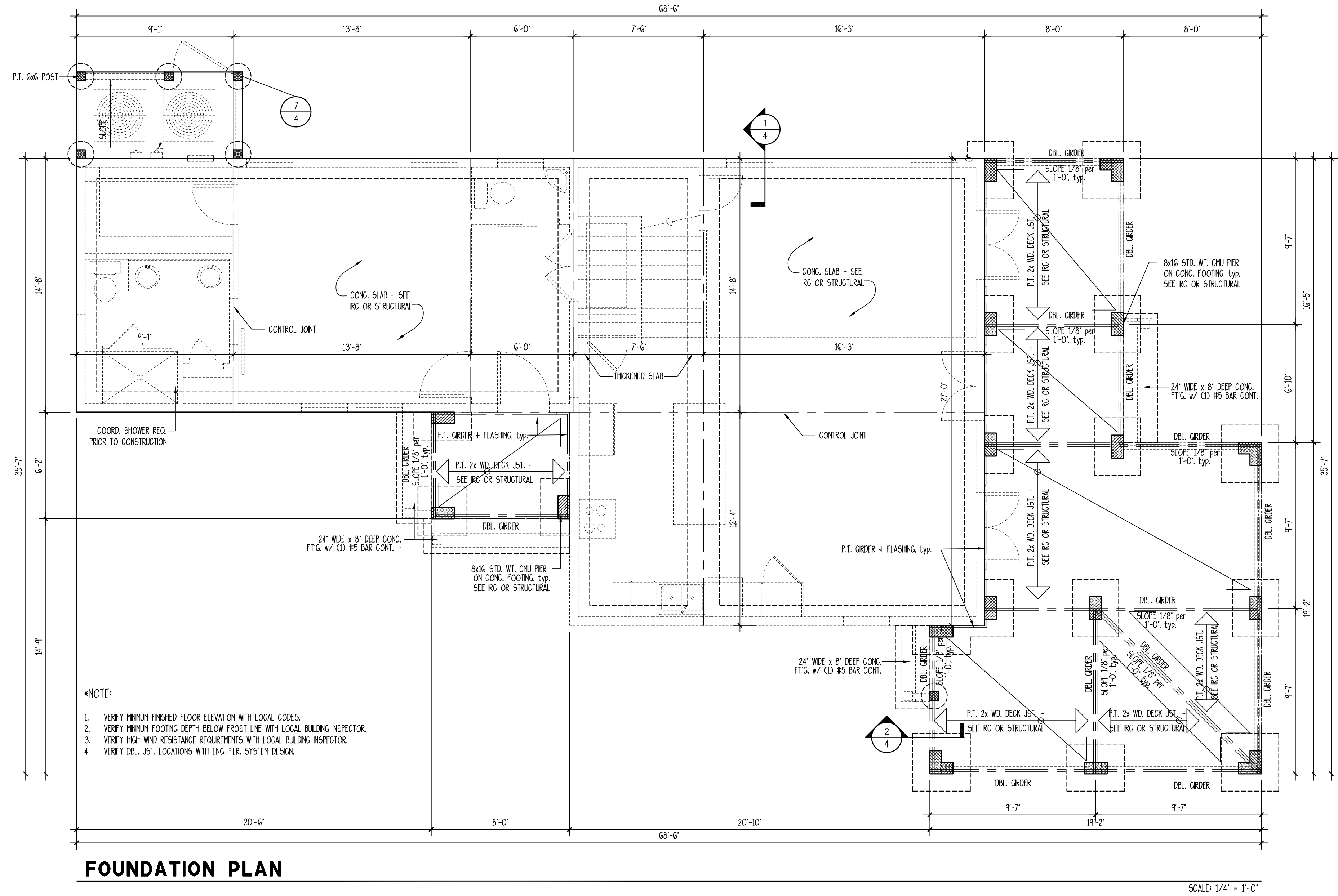
2 EXT. STAIRS

SCALE: 3/8" = 1'-0"



1 DETAIL • INT. STAIRS

SCALE: 3/8" = 1'-0"



FOUNDATION PLAN

SCALE: 1/4" = 1'-0"

- *NOTE:
1. VERIFY MINIMUM FINISHED FLOOR ELEVATION WITH LOCAL CODES.
 2. VERIFY MINIMUM FOOTING DEPTH BELOW FROST LINE WITH LOCAL BUILDING INSPECTOR.
 3. VERIFY HIGH WIND RESISTANCE REQUIREMENTS WITH LOCAL BUILDING INSPECTOR.
 4. VERIFY DEL. JST. LOCATIONS WITH ENG. FLR. SYSTEM DESIGN.

LONG RESIDENCE
 LOT # 2506 CARLTON LANDING
 EUFALA, OKLAHOMA

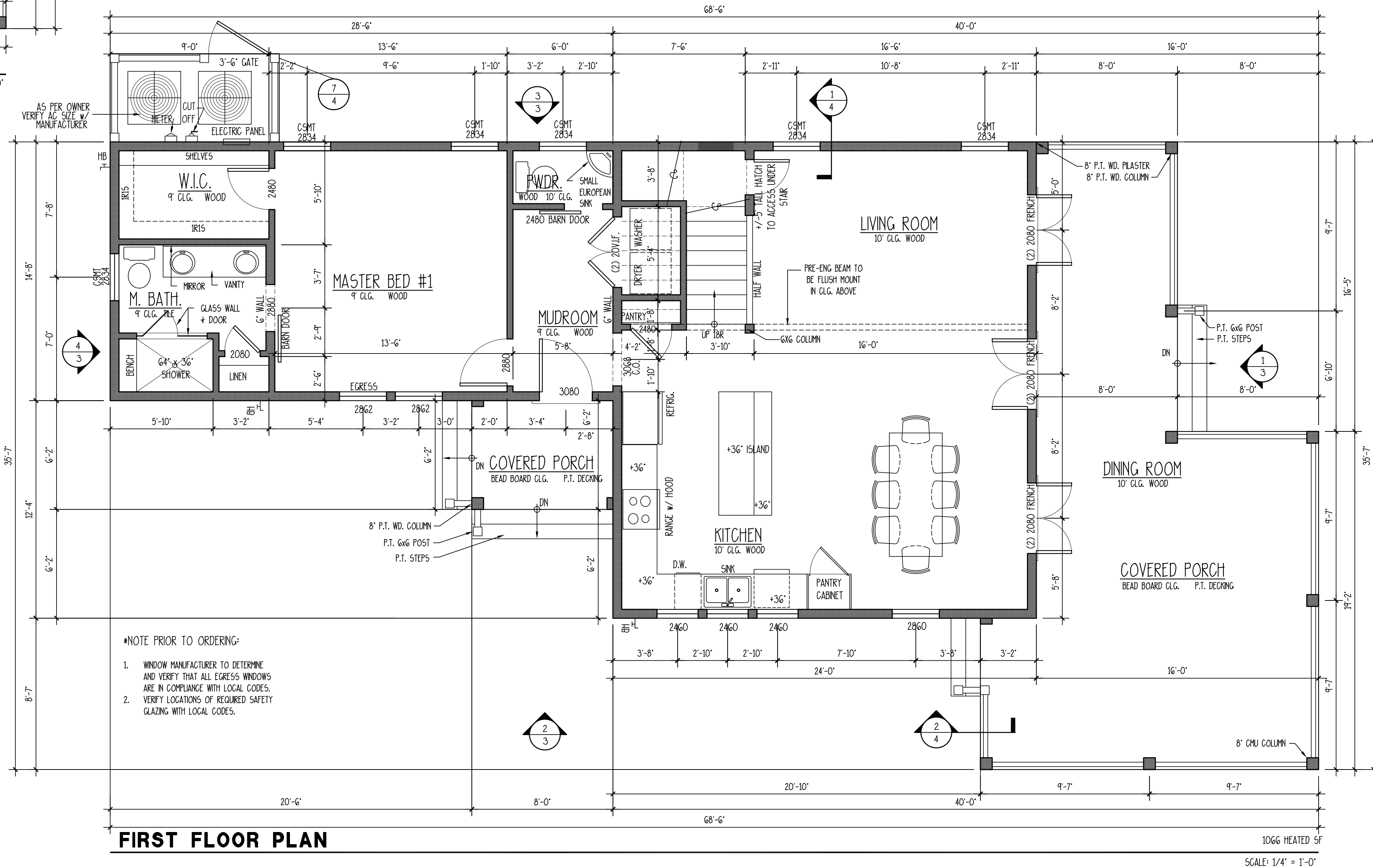
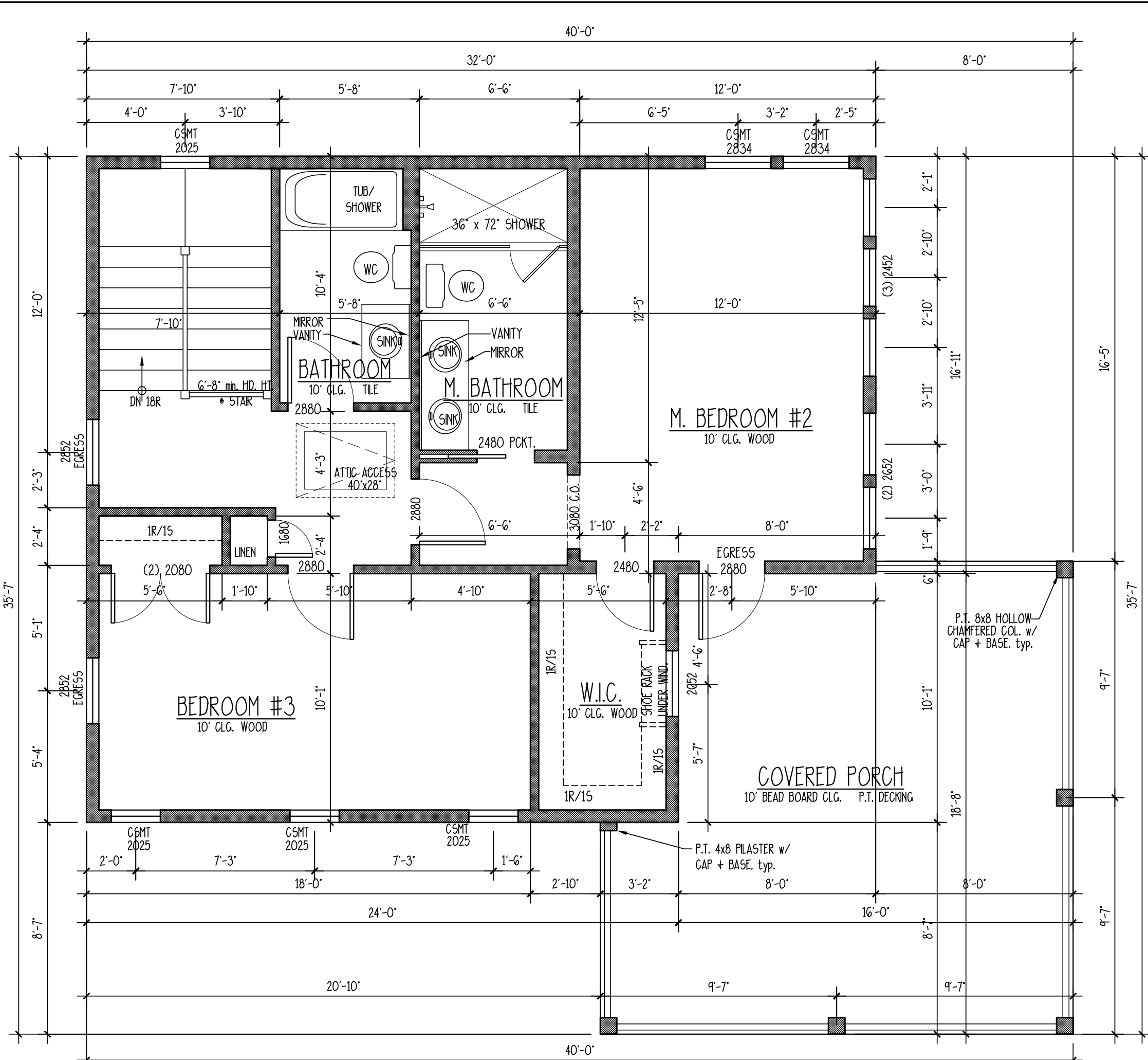
ARA
ALLISON RAMSEY
 Architects, Inc. creating sustainable timeless design
 1003 Charles St.
 Beaufort SC, 29902
 (843) 984-6559
 www.allisonramseyarchitect.com

THIS PLAN HAS BEEN PREPARED TO MEET THE PROFESSIONAL STANDARDS AND PRACTICES, HOWEVER, BEARING CODES AND PARALLEL CONDITIONS VARY FOR DIFFERENT LOCATIONS. IT IS THE RESPONSIBILITY OF THE PURCHASER OF THIS PLAN TO VERIFY THE FOLLOWING BEFORE BEGINNING CONSTRUCTION: ALLISON RAMSEY ARCHITECTS, INC. ASSUMES NO LIABILITY FOR ANY HOME CONSTRUCTION FROM THIS PLAN.
 *VERIFY ALL IMPRESSIONS PRIOR TO PROCEEDING WITH CONSTRUCTION
 *PLANS INDICATE LOCATIONS ONLY; ENGINEERING ASPECTS SHOULD INCORPORATE ACTUAL SITE CONDITIONS.
 *CHECK ALL FOUNDATION LAYOUTS ARE NOT INCLUDED. THESE SHOULD BE OBTAINED FROM A LOCAL PROFESSIONAL ENGINEER OR ARCHITECT.
 *AND THAT EQUIPMENT IS SIZED CORRECTLY FOR YOUR PARTICULAR REGION AND CONDITIONS.
 *VERIFY ALL STRUCTURAL ELEMENTS WITH LOCAL ENGINEER AND/OR ARCHITECT.

| | |
|------------|-----------|
| DATE: | 8/27/2019 |
| JOB NO. | 19383 |
| DWG. BY: | RF |
| DWG. NAME: | 19383.dwg |

Copyright 2019 by Allison Ramsey Architects, Inc. All rights reserved.

1



LONG RESIDENCE
 LOT # 2506 CARLTON LANDING
 EUFALA, OKLAHOMA

ARA
ALLISON RAMSEY
 Architects, Inc. creating sustainable timeless design
 1003 Charles St.
 Beaufort SC, 29902
 (843) 984-6559
 www.allisonramseyarchitect.com

THIS PLAN HAS BEEN PREPARED TO MEET PROFESSIONAL STANDARDS AND PRACTICES. HOWEVER, BUILDING CODES AND REGULATIONS VARY FOR DIFFERENT LOCATIONS. IT IS THE RESPONSIBILITY OF THE PURCHASER OF THIS PLAN TO REFORM THE FOLLOWING BEFORE BEGINNING CONSTRUCTION. ALLISON RAMSEY ARCHITECTS, INC. ASSUMES NO LIABILITY FOR ANY HOME CONSTRUCTED FROM THIS PLAN.

VERIFY ALL DIMENSIONS PRIOR TO PROCEEDING WITH CONSTRUCTION

*PLANS INDICATE LOCATIONS ONLY. ENGINEERING ASPECTS SHOULD INCORPORATE ACTUAL SITE CONDITIONS.

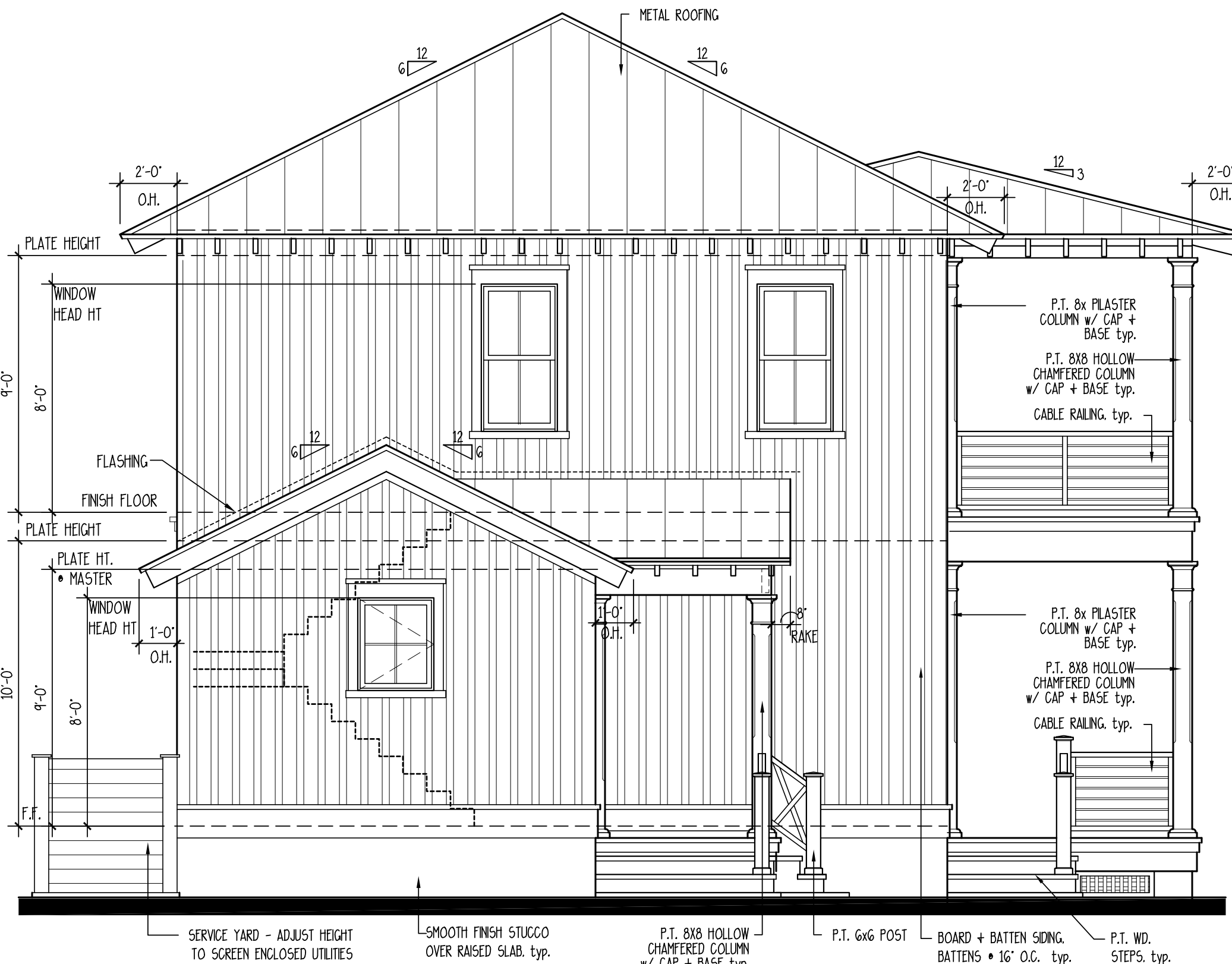
*DOOR & WINDOW LAYOUTS ARE NOT INCLUDED. THESE SHOULD BE OBTAINED FROM A LOCAL ARCHITECT OR SUPPLIER.

*ELECTRICAL LAYOUTS ARE NOT INCLUDED. THESE SHOULD BE OBTAINED FROM A LOCAL ELECTRICAL CONTRACTOR.

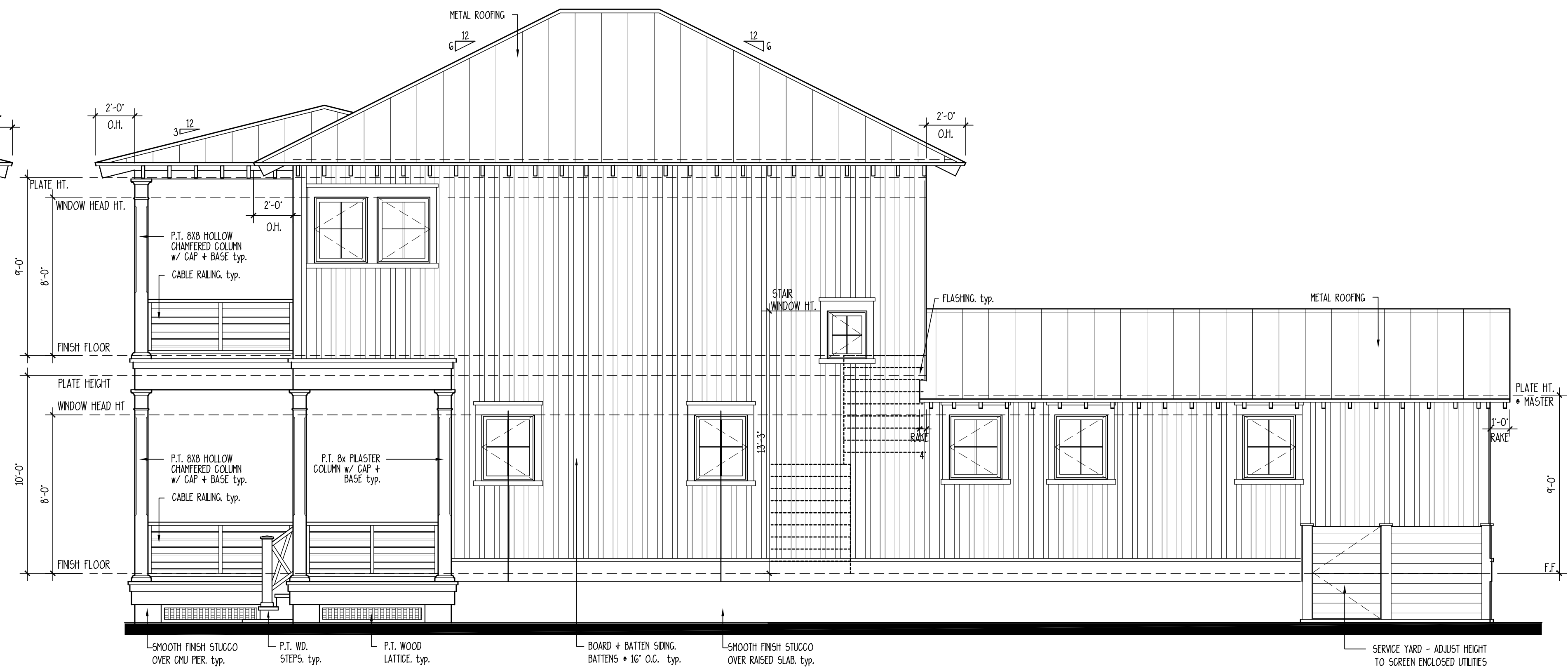
*MECHANICAL LAYOUTS ARE NOT INCLUDED. THESE SHOULD BE OBTAINED FROM A LOCAL MECHANICAL CONTRACTOR.

*VERIFY ALL STRUCTURAL ELEMENTS WITH LOCAL ENGINEER AND/OR ARCHITECT.

| | |
|-------------|-----------|
| DATE: | 8/27/2019 |
| JOB NO.: | 19383 |
| DRAWN BY: | HF |
| ENCL. NAME: | 19383.dwg |



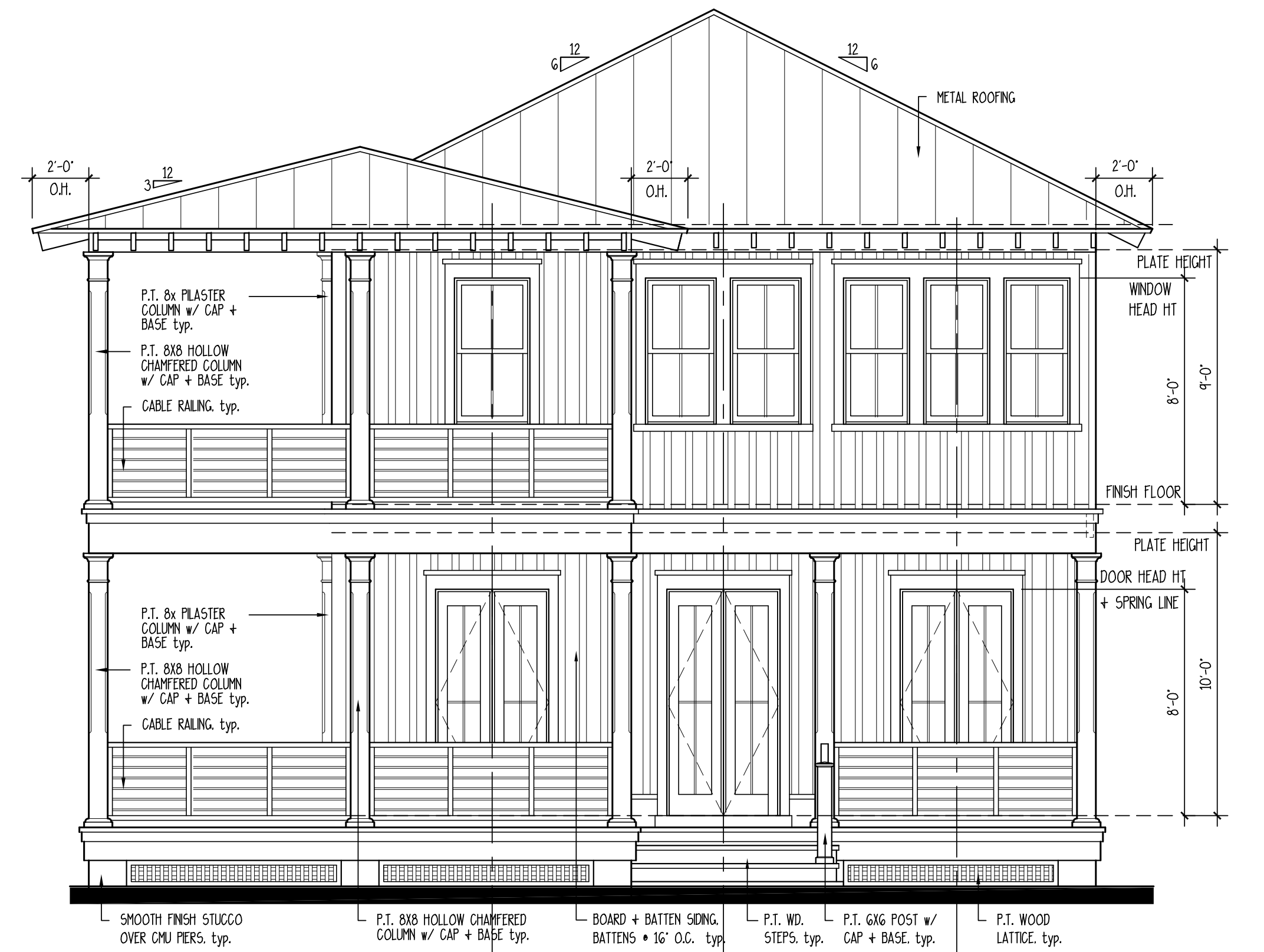
4 REAR ELEVATION
SCALE: 1/4" = 1'-0"



3 RIGHT ELEVATION
SCALE: 1/4" = 1'-0"



2 LEFT ELEVATION
SCALE: 1/4" = 1'-0"



1 FRONT ELEVATION
SCALE: 1/4" = 1'-0"

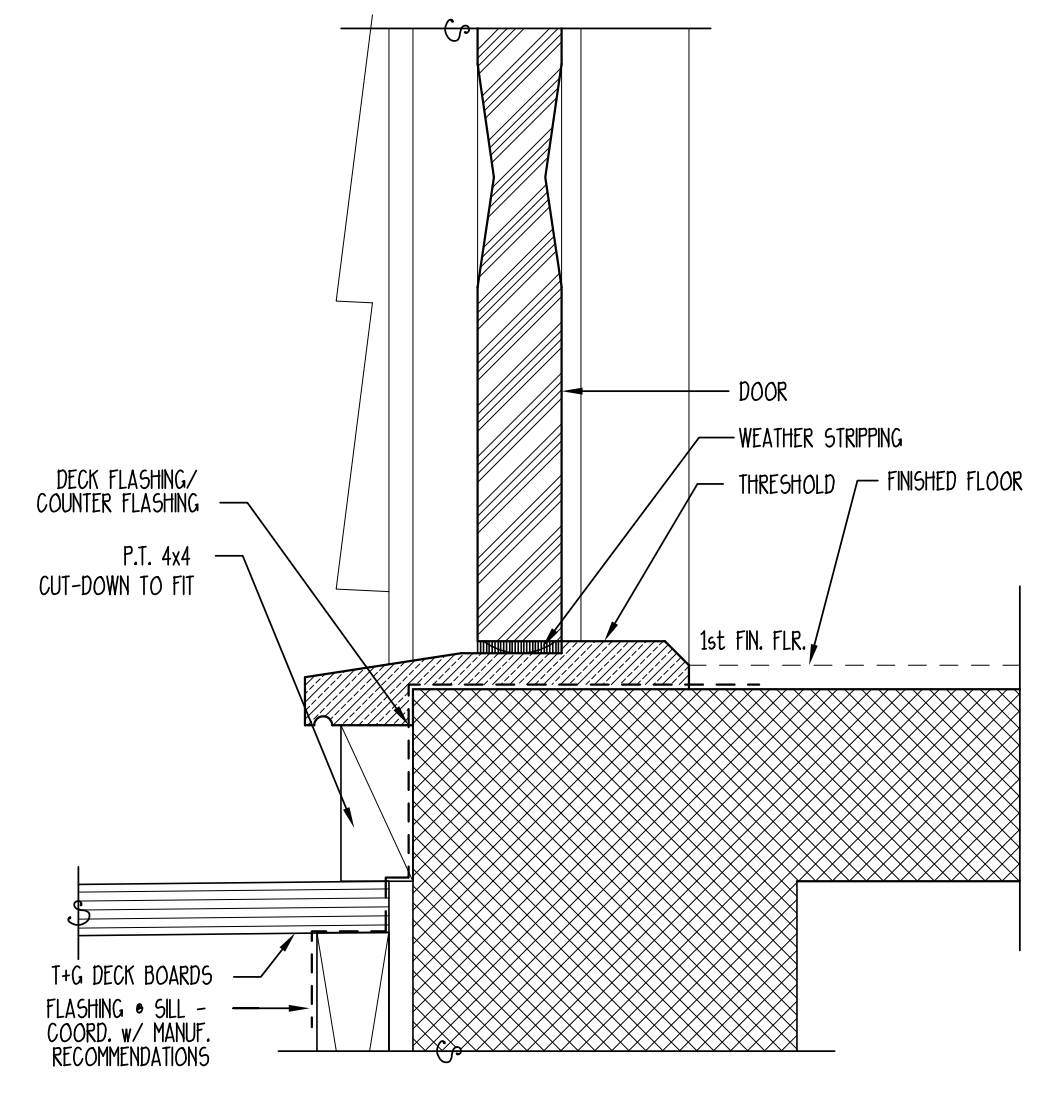
LONG RESIDENCE
LOT # 2506 CARLTON LANDING
EUFAULA, OKLAHOMA

ARA
ALLISON RAMSEY
Architects, Inc. creating sustainable timeless design
1003 Charles St.
Beaufort SC, 29902
(843) 984-6559
www.allisonramseyarchitect.com

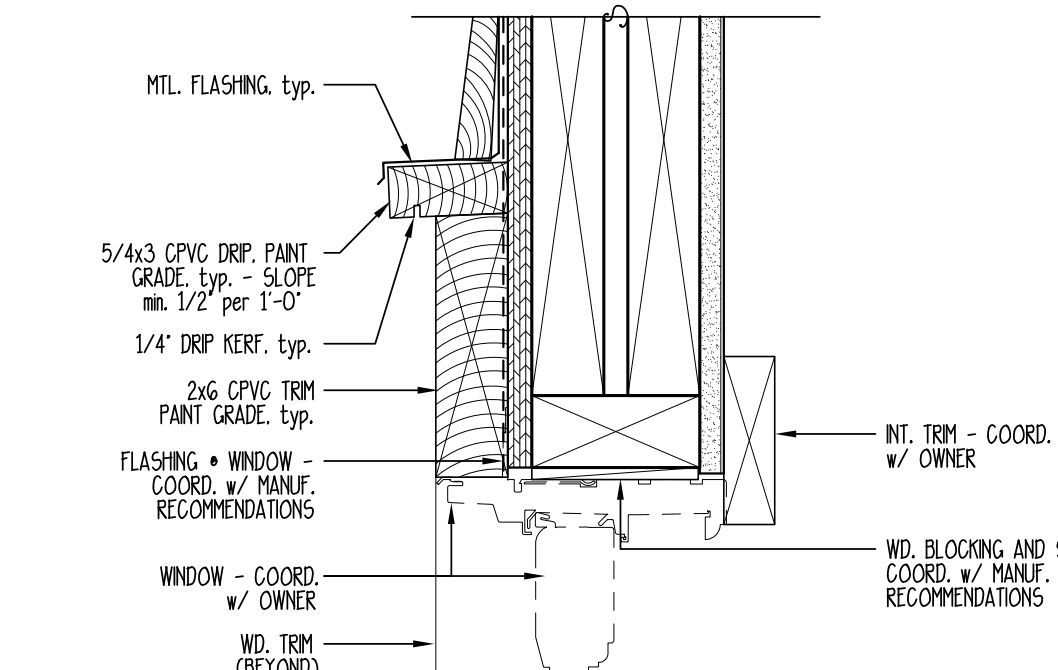
THIS PLAN HAS BEEN PREPARED TO MEET THE PROFESSIONAL STANDARDS AND PRACTICES, HOWEVER, BEARING COSES AND DIMENSIONAL CONDITIONS MAY VARY FOR DIFFERENT LOCATIONS. IT IS THE RESPONSIBILITY OF THE PURCHASER OF THIS PLAN TO VERIFY THE FOLLOWING BEFORE BEGINNING CONSTRUCTION: ALLISON RAMSEY ARCHITECTS, INC. ASSURES NO LIABILITY FOR ANY HOME CONSTRUCTED FROM THIS PLAN.
-VERIFY ALL DIMENSIONS PRIOR TO PROCEEDING WITH CONSTRUCTION
-PLANS INDICATE LOCATIONS ONLY; ENGINEERING ASPECTS SHOULD INCORPORATE ACTUAL SITE CONDITIONS.
-STRUCTURE, FOUNDATION, AND MECHANICAL LAYOUTS ARE NOT INCLUDED. THESE SHOULD BE OBTAINED FROM A LICENSED PROFESSIONAL ENGINEER OR ARCHITECT.
-MECHANICAL, ELECTRICAL, AND PLUMBING EQUIPMENT IS SIZED CORRECTLY FOR YOUR PARTICULAR REGION AND CONDITIONS.
-VERIFY ALL STRUCTURAL ELEMENTS WITH LOCAL ENGINEER AND/OR ARCHITECT.

| | |
|-------------|-----------|
| DATE: | 8/27/2019 |
| JOB NO.: | 19383 |
| DRAWN BY: | HF |
| ENGR. NAME: | 19383.dwg |

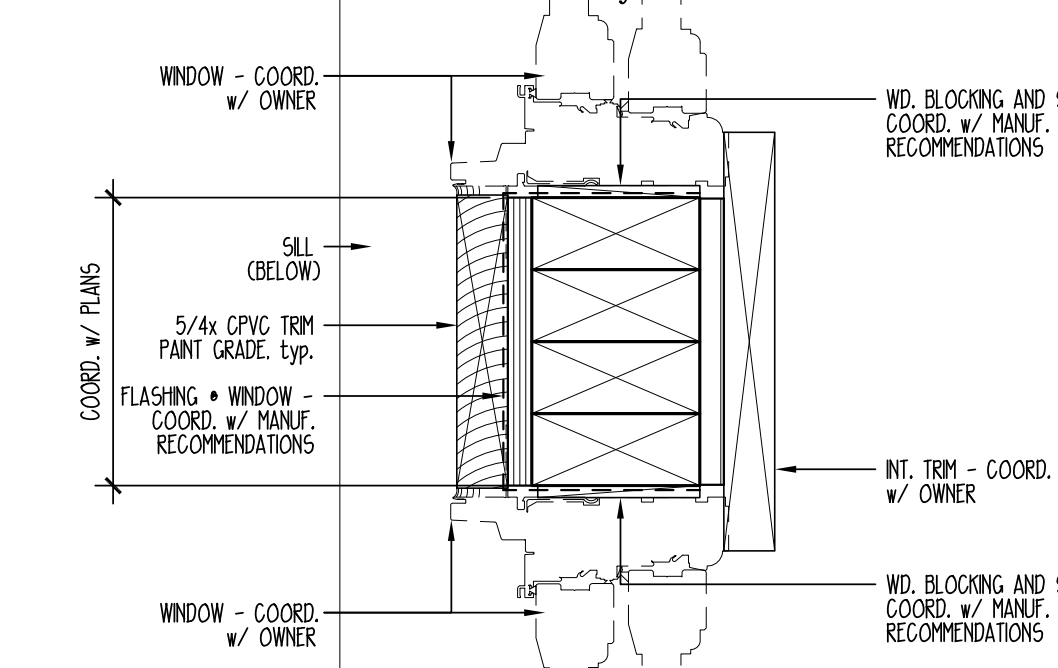
Copyright 2019 by Allison Ramsey Architects, Inc. All rights reserved.



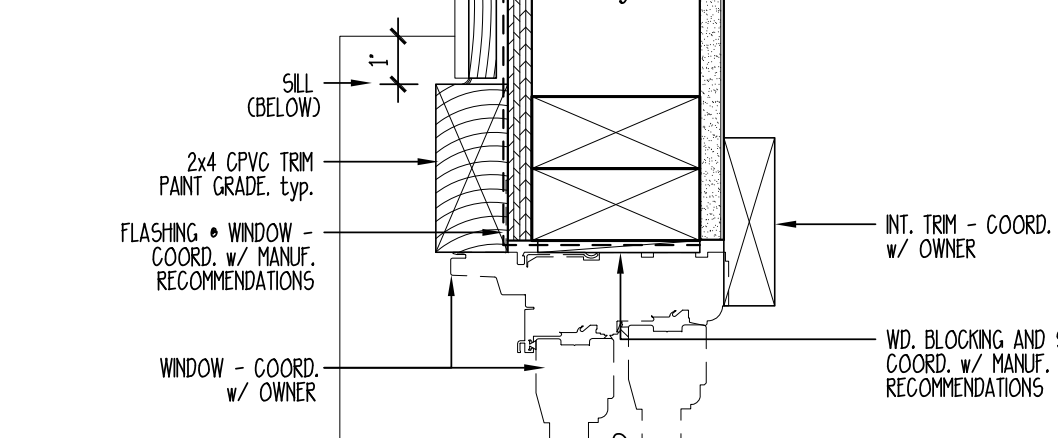
14 TYPICAL EXTERIOR DOOR SILL
SCALE: 3" = 1'-0"



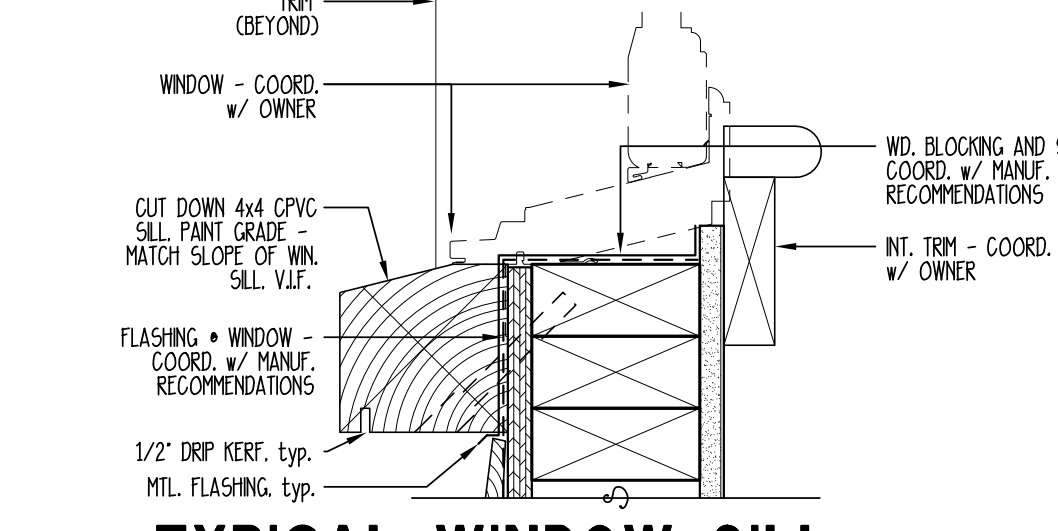
13 TYPICAL WINDOW & DOOR HEAD
SCALE: 3" = 1'-0"



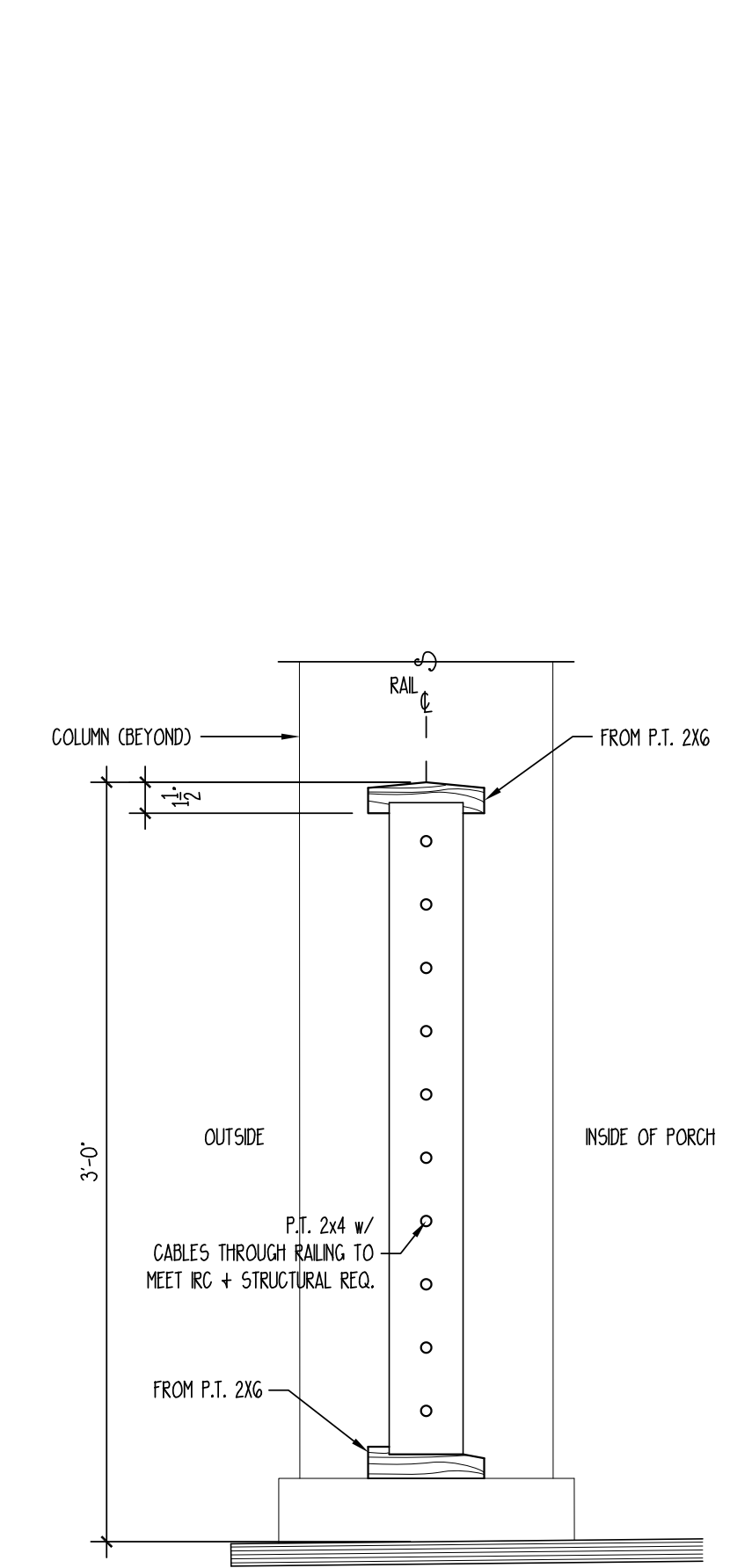
12 TYPICAL WINDOW JAMB & MULL
SCALE: 3" = 1'-0"



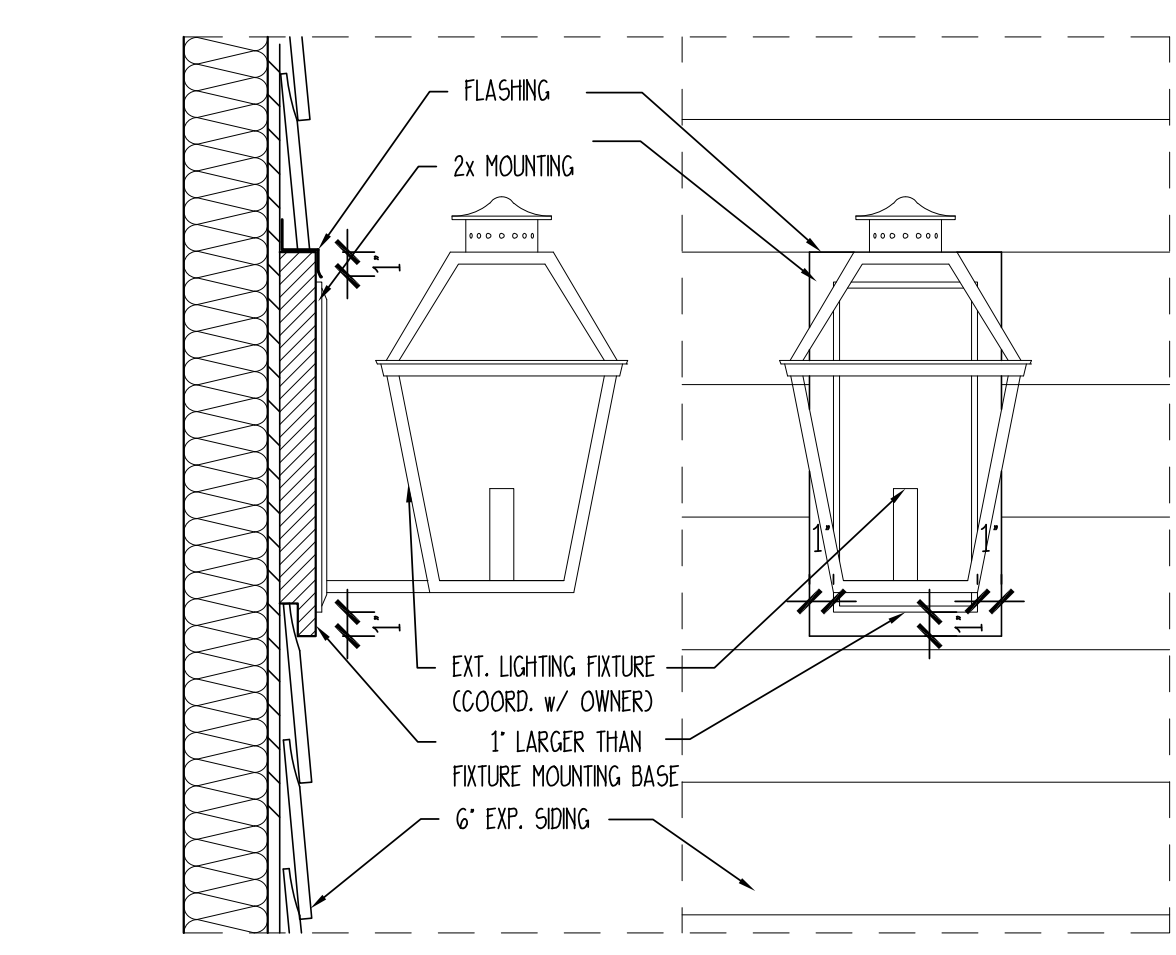
11 TYPICAL WINDOW & DOOR JAMB
SCALE: 3" = 1'-0"



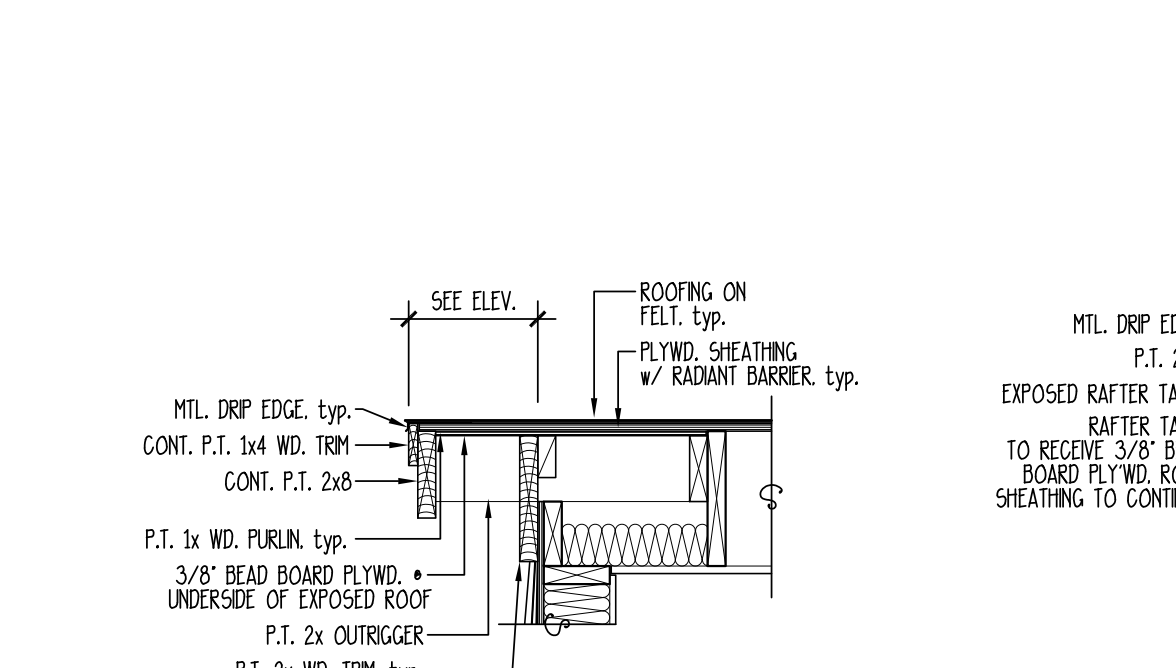
10 TYPICAL WINDOW SILL
SCALE: 3" = 1'-0"



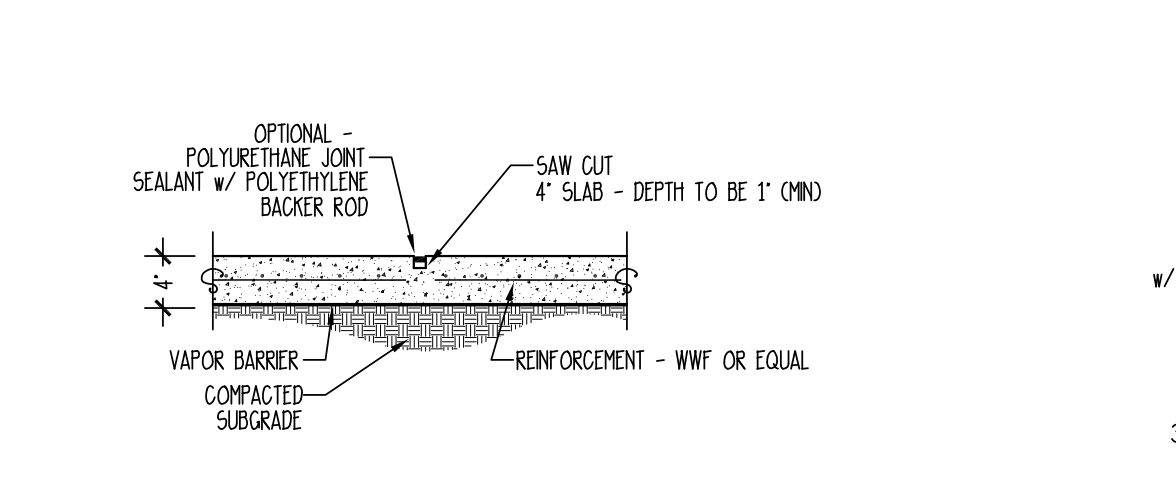
9 PICKET & RAIL DETAIL
SCALE: 1 1/2" = 1'-0"



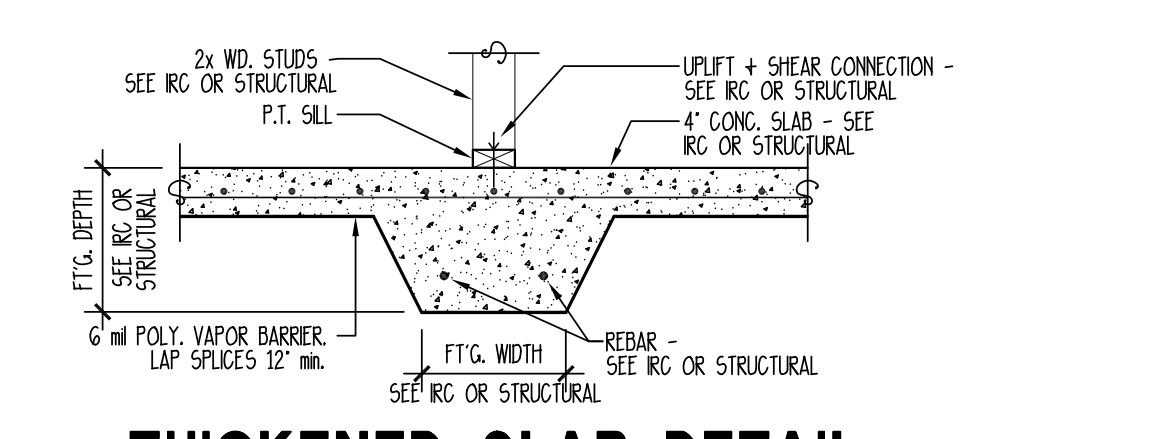
15 EXTERIOR LIGHTING MOUNT DETAIL
SCALE: 1 1/2" = 1'-0"



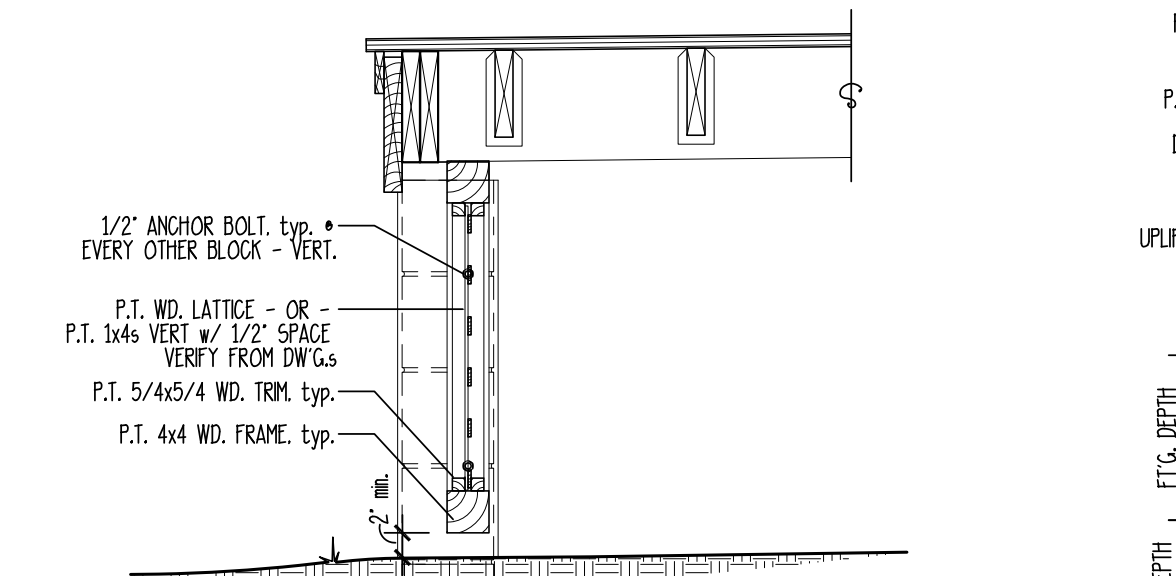
6 TYP. RAKE DETAIL
SCALE: 3/4" = 1'-0"



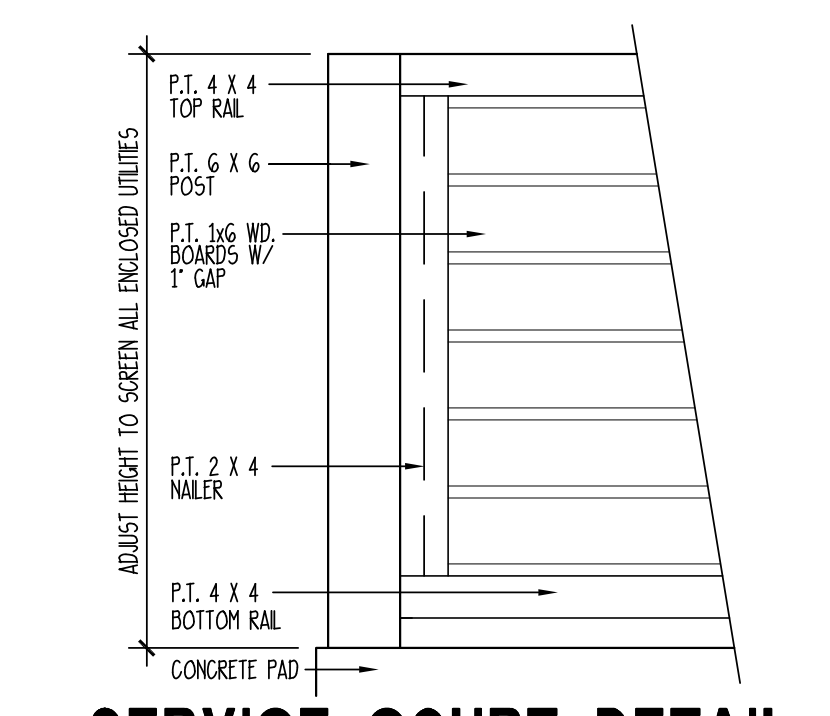
5 CONTROL JOINT DETAIL
SCALE: 3/4" = 1'-0"



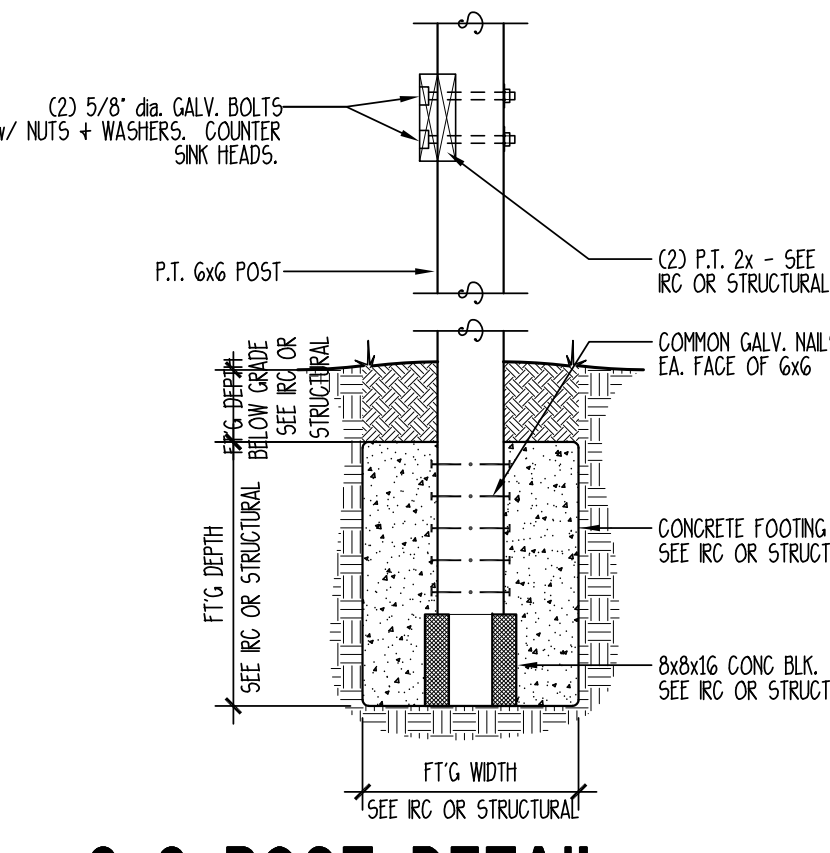
4 THICKENED SLAB DETAIL
NOT TO SCALE



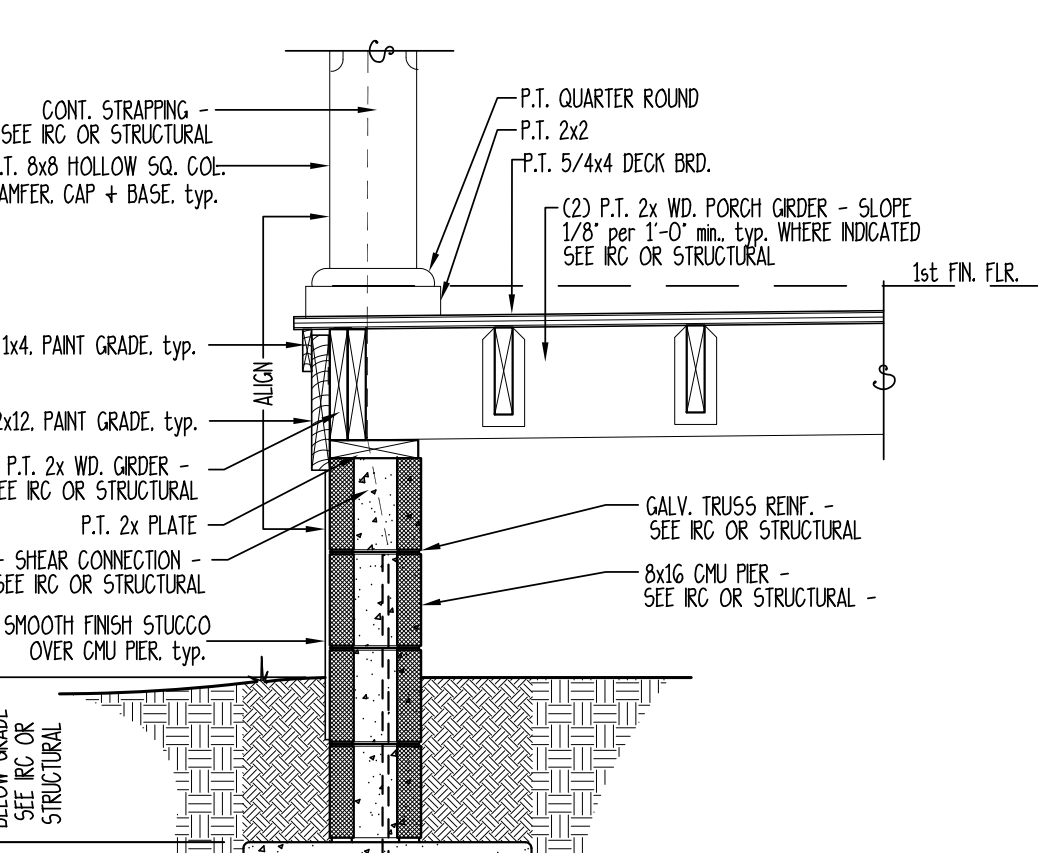
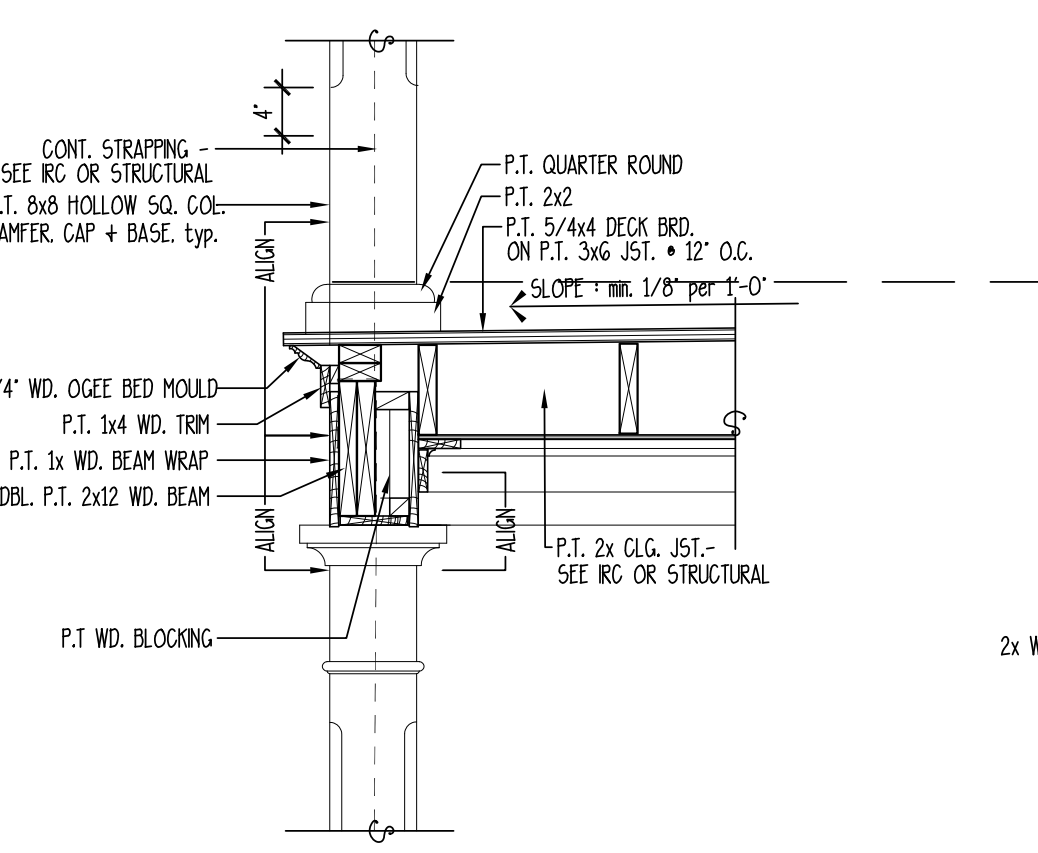
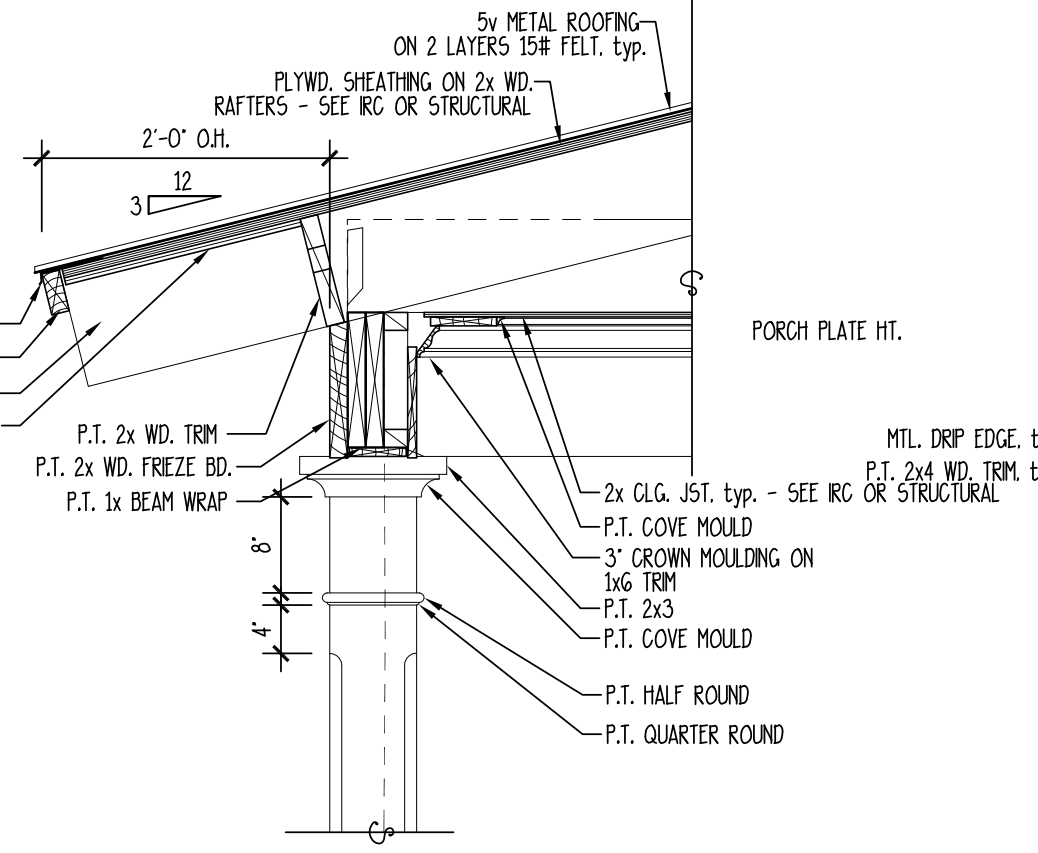
3 SCREENING DETAIL
SCALE: 3/4" = 1'-0"



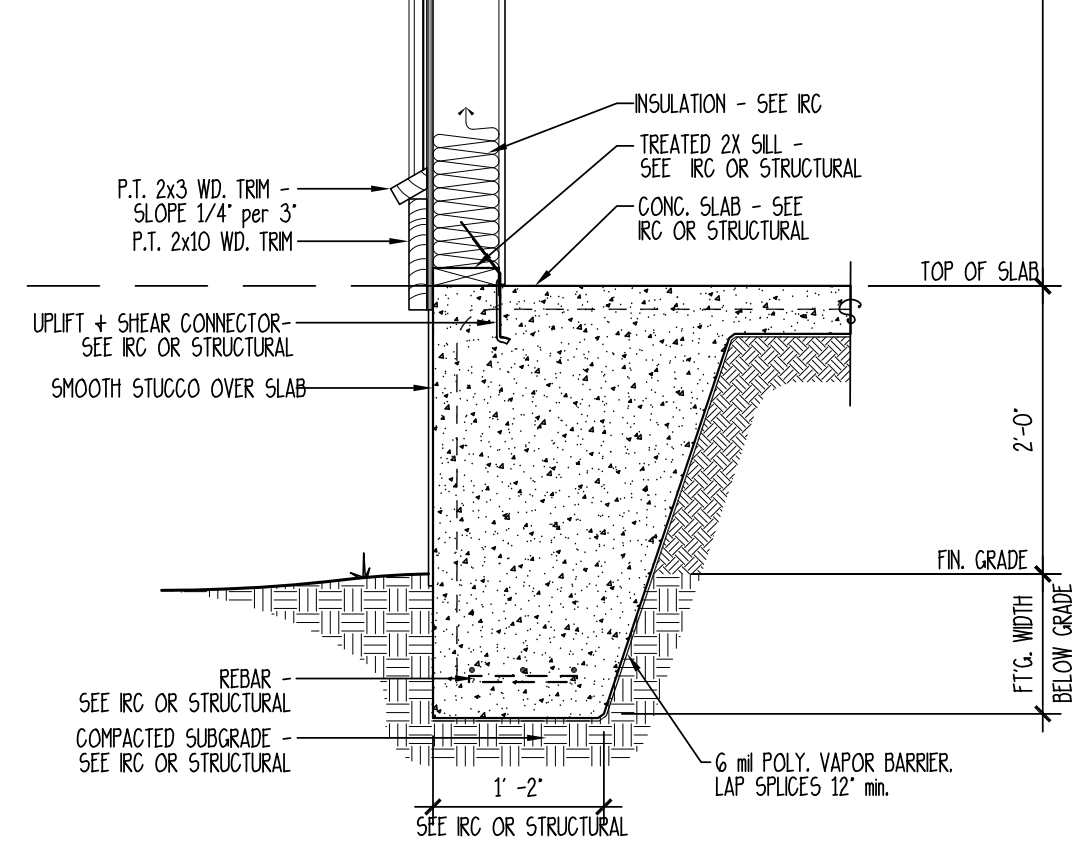
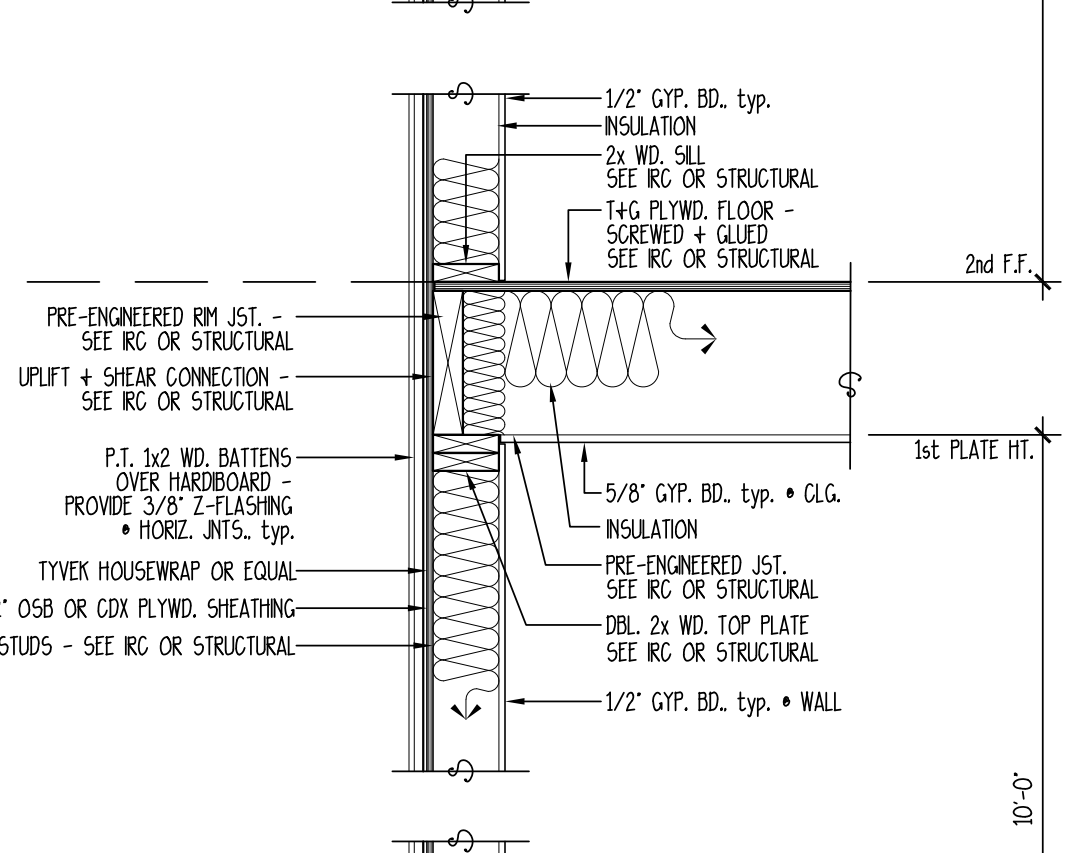
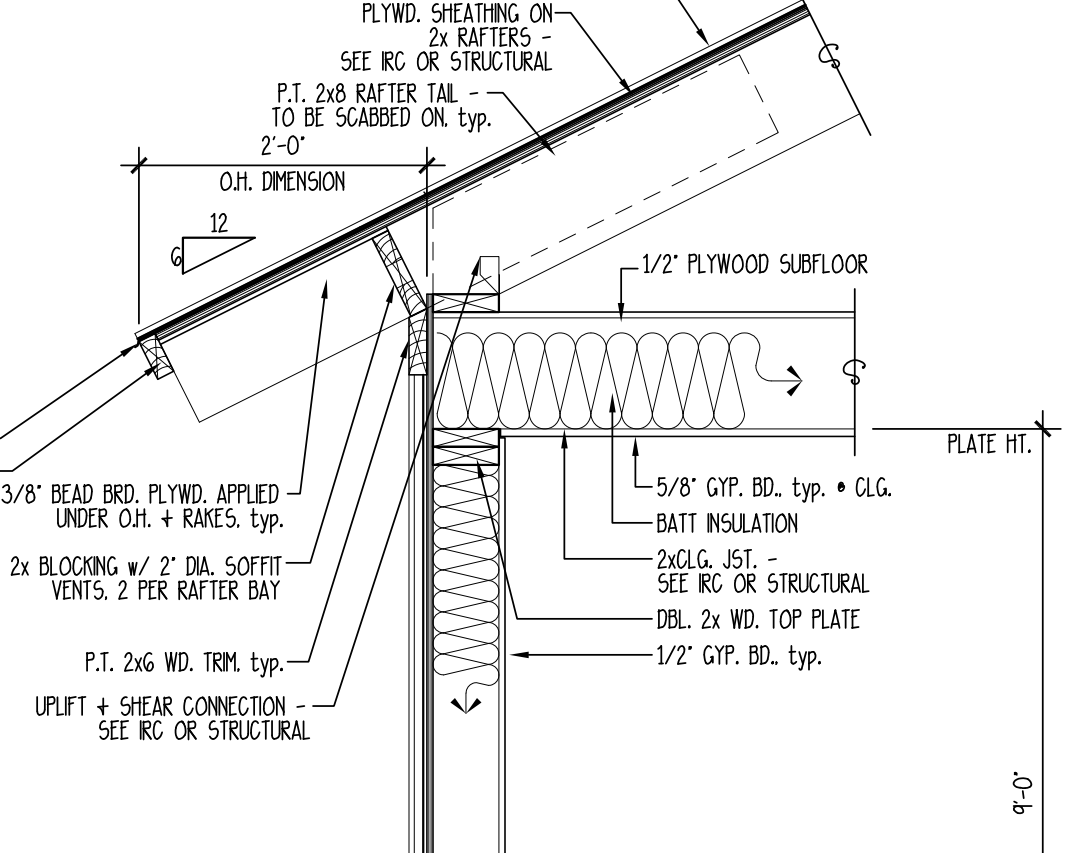
8 SERVICE COURT DETAIL
SCALE: 3/4" = 1'-0"



7 6x6 POST DETAIL
SCALE: 3/4" = 1'-0"



2 TYPICAL PORCH SECTION
SCALE: 3/4" = 1'-0"



1 TYPICAL WALL SECTION
SCALE: 3/4" = 1'-0"

NOTES:
1. VERIFY MIN. FOOTING DEPTH BELOW FROST LINE WITH LOCAL BUILDING CODES
2. VERIFY HIGH WIND RESISTANCE REQUIREMENTS WITH LOCAL BUILDING INSPECTOR.

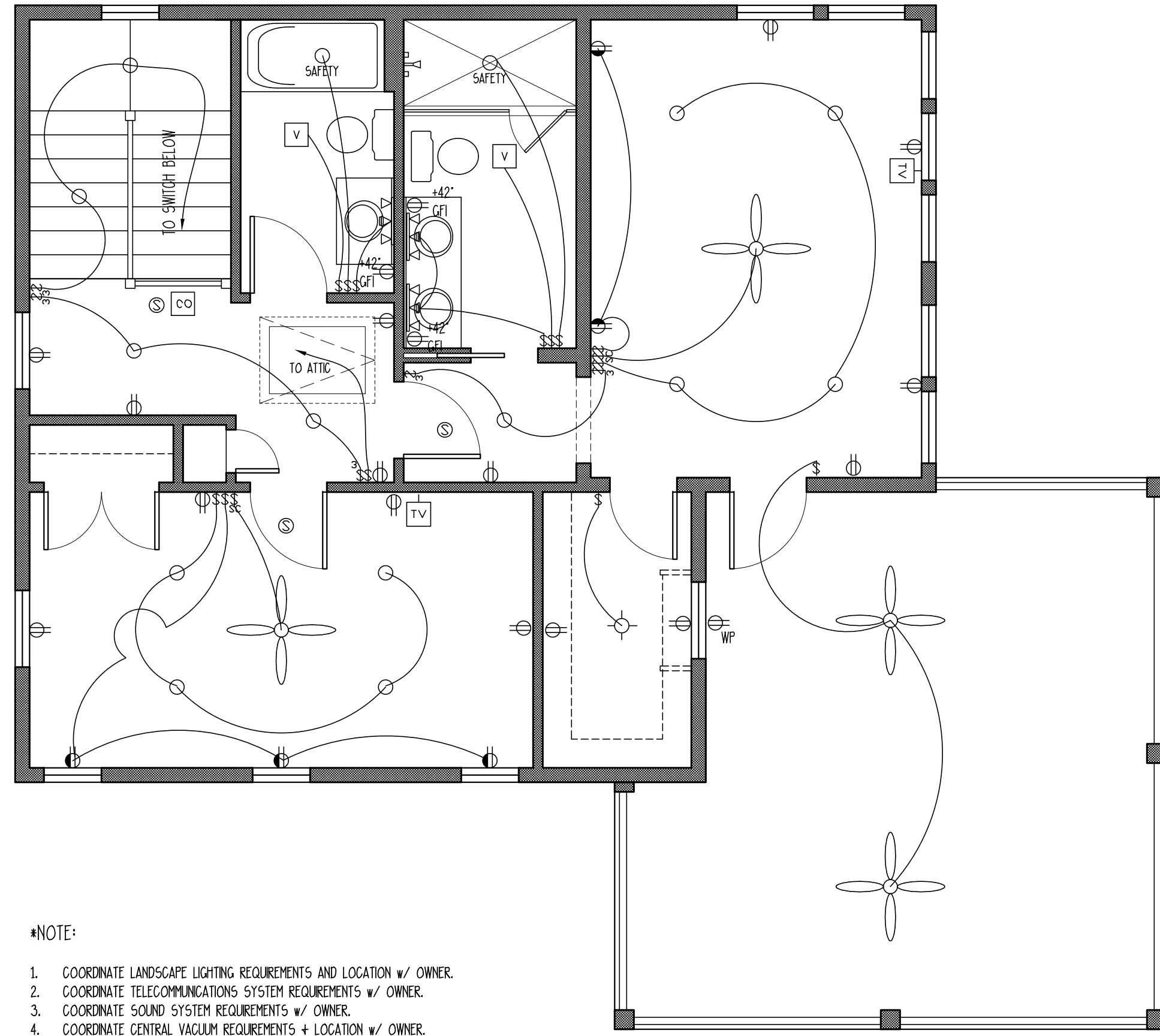
LONG RESIDENCE
LOT # 2506 CARLTON LANDING
EUFAULA, OKLAHOMA

ALLISON RAMSEY ARCHITECTS
ARA
Architects
creating sustainable timeless design
1003 Charles St.
Beaufort SC, 29902
(843) 984-6559
www.allisonramseyarchitect.com

THIS PLAN HAS BEEN PREPARED BY MEET FOR PROFESSIONAL ENGINEERS AND ARCHITECTS. HOWEVER, ENGINEERING CODES AND ENVIRONMENTAL CONDITIONS MAY BE DIFFERENT LOCATIONS. IT IS THE RESPONSIBILITY OF THE PURCHASER OF THIS PLAN TO REFORM THE FOLLOWING BEFORE BEGINNING CONSTRUCTION. ALLISON RAMSEY ARCHITECTS, INC. ASSUMES NO LIABILITY FOR ANY HOME CONSTRUCTION FROM THIS PLAN.
*VERIFY ALL DIMENSIONS PRIOR TO PROCEEDING WITH CONSTRUCTION
*PLANS INDICATE LOCATIONS ONLY. ENGINEERING ASPECTS SHOULD INCORPORATE ACTUAL SITE CONDITIONS.
*CHECK WITH LOCAL BUILDING DEPARTMENT FOR ANY LOCAL REQUIREMENTS AND THAT EQUIPMENT IS SIZED CORRECTLY FOR YOUR PARTICULAR REGION AND CONDITIONS.
*VERIFY ALL STRUCTURAL ELEMENTS WITH LOCAL ENGINEER AND/OR ARCHITECT.

| | |
|------------|-----------|
| DATE: | 8/27/2019 |
| JOB NO.: | 19383 |
| DWN. BY: | HF |
| DWG. NAME: | 19383.dwg |

Copyright 2019 by Allison Ramsey Architects, Inc. All rights reserved.
4



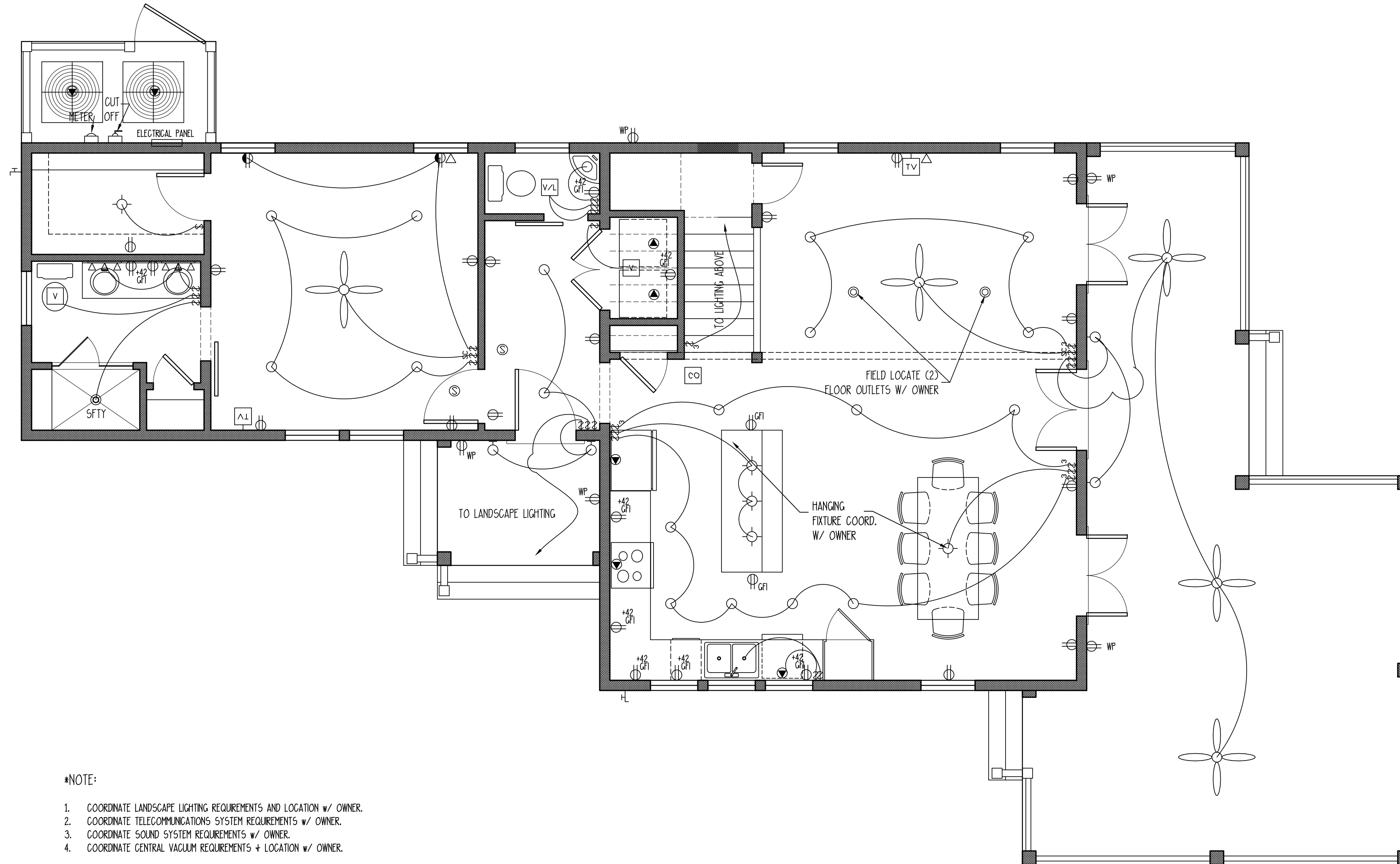
*NOTE:

1. COORDINATE LANDSCAPE LIGHTING REQUIREMENTS AND LOCATION w/ OWNER.
2. COORDINATE TELECOMMUNICATIONS SYSTEM REQUIREMENTS w/ OWNER.
3. COORDINATE SOUND SYSTEM REQUIREMENTS w/ OWNER.
4. COORDINATE CENTRAL VACUUM REQUIREMENTS + LOCATION w/ OWNER.

2 SECOND FLOOR ELECTRICAL PLAN

SCALE: 1/4" = 1'-0"

| | |
|--|--------------------------|
| | SINGLE POLE SWITCH |
| | THREE WAY SWITCH |
| | FOUR WAY SWITCH |
| | DIMMER SWITCH |
| | DUPLEX OUTLET |
| | WATER PROOF OUTLET |
| | GROUND FAULT OUTLET |
| | SPECIALTY OUTLET |
| | FLOOR OUTLET |
| | TELEPHONE JACK |
| | TELEVISION JACK |
| | VENT |
| | VENT W/ LIGHT |
| | SURFACE MOUNTED FIXTURE |
| | RECESSED FIXTURE |
| | WALL MOUNTED FIXTURE |
| | FLOOD LIGHT |
| | FLOURESCENT FIXTURE |
| | CEILING FAN |
| | STRIP LIGHTING |
| | CEILING BOX |
| | DOOR CHIME |
| | ELECTRICAL PANEL |
| | SMOKE ALARM |
| | CARBON MONOXIDE DETECTOR |



*NOTE:

1. COORDINATE LANDSCAPE LIGHTING REQUIREMENTS AND LOCATION w/ OWNER.
2. COORDINATE TELECOMMUNICATIONS SYSTEM REQUIREMENTS w/ OWNER.
3. COORDINATE SOUND SYSTEM REQUIREMENTS w/ OWNER.
4. COORDINATE CENTRAL VACUUM REQUIREMENTS + LOCATION w/ OWNER.

1 FIRST FLOOR ELECTRICAL PLAN

SCALE: 1/4" = 1'-0"

Copyright 2019 by Allison Ramsey Architects, Inc. All rights reserved.

THIS PLAN HAS BEEN PREPARED TO MEET THE PROFESSIONAL STANDARDS AND PRACTICES, HOWEVER, BEARING IN MIND THE VARIOUS AND UNPREDICTABLE CONDITIONS THAT MAY OCCUR AT DIFFERENT LOCATIONS. BEFORE BEGINNING CONSTRUCTION, ALLISON RAMSEY ARCHITECTS, INC. ASSURES NO LIABILITY FOR ANY WORK CONSTRUCTED FROM THIS PLAN.
 *VERIFY ALL DIMENSIONS PRIOR TO PROCEEDING WITH CONSTRUCTION
 *PLANS INDICATE LOCATIONS ONLY, ENGINEERING ASPECTS SHOULD INCORPORATE ACTUAL SITE CONDITIONS.
 *FIELD & FIELDWORK LOCATIONS ARE NOT INCLUDED. THESE SHOULD BE OBTAINED FROM A SURVEY & FIELDWORK LAYOUTS ARE NOT INCLUDED. THESE SHOULD BE OBTAINED FROM A SURVEY & FIELDWORK LAYOUTS.
 AND THAT EQUIPMENT IS SIZED CORRECTLY FOR YOUR PARTICULAR REGION AND CONDITIONS.
 *VERIFY ALL STRUCTURAL ELEMENTS WITH LOCAL ENGINEER AND/OR ARCHITECT.

| | |
|------------|-----------|
| DATE: | 8/27/2019 |
| JOB NO.: | 19383 |
| OWN. B/C: | HF |
| DWG. NAME: | 19383.dwg |

LONG RESIDENCE
 LOT # 2506 CARLTON LANDING
 EDWALL, OKLAHOMA

ALLISON RAMSEY
 Architects, Inc. creating sustainable timeless design
 1003 Charles St.
 Beaufort, SC 29902
 (843) 984-6559
 www.allisonramseyarchitect.com

5